

Aquila at Luna Park

406 Clipper,
Irvine, CA 92618
844-583-1082



Amenities

Innovative multi-family homes with inspired amenities.

Swimming Pool

Clubhouse

Park

Picnic Area

Dog Park

Playground

What's nearby

Located in the beautiful city of Irvine, CA.

Aquila 1

4 bd . 3 ba . 1 half ba . 2,542 ft²

Aquila 2

4 bd . 3 ba . 1 half ba . 2,653 ft²

Aquila 1X

5 bd . 4 ba . 2 half ba . 3,150 ft²

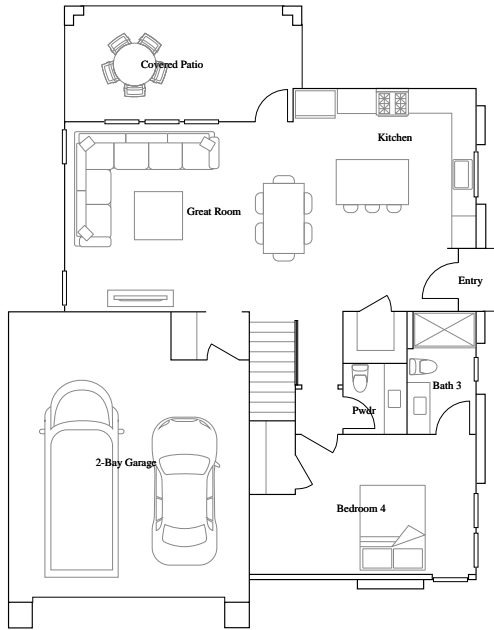
Aquila 2X

5 bd . 4 ba . 2 half ba . 3,281 ft²

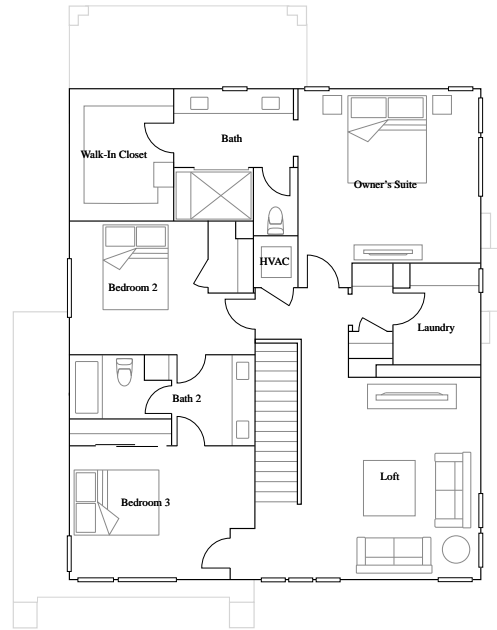
Aquila 1

4 bd . 3 ba . 1 half ba . 2,542 ft²

1st Floor



2nd Floor



Available Exteriors



Boutique Exterior A



Transitional Exterior B



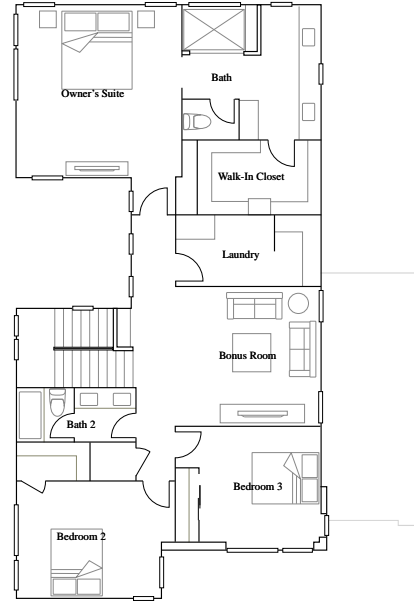
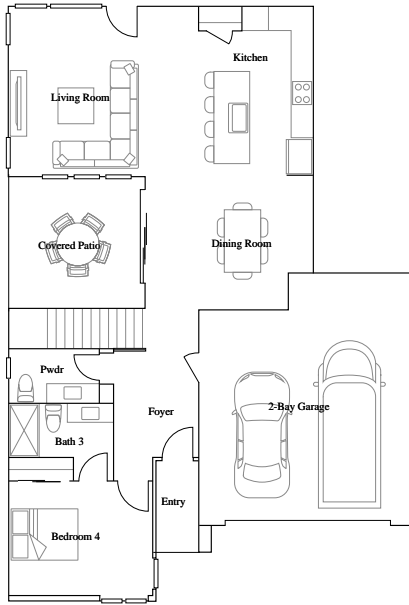
Modern Farmhouse Exterior C

Aquila 2

4 bd . 3 ba . 1 half ba . 2,653 ft²

1st Floor

2nd Floor



Available Exteriors



Boutique Exterior A

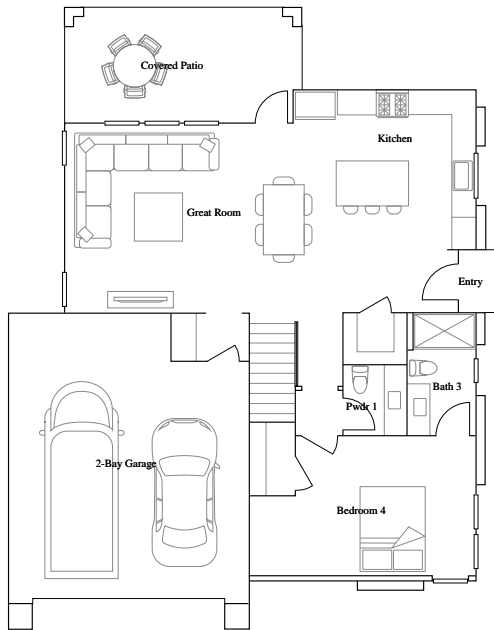
Transitional Exterior B

Modern Farmhouse Exterior C

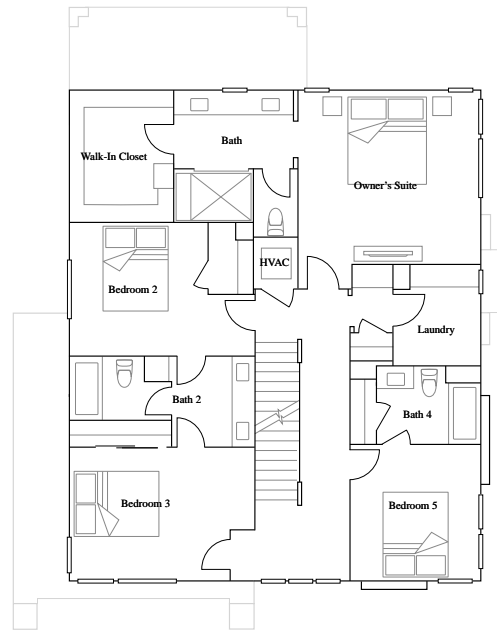
Aquila 1X

5 bd . 4 ba . 2 half ba . 3,150 ft²

1st Floor



2nd Floor



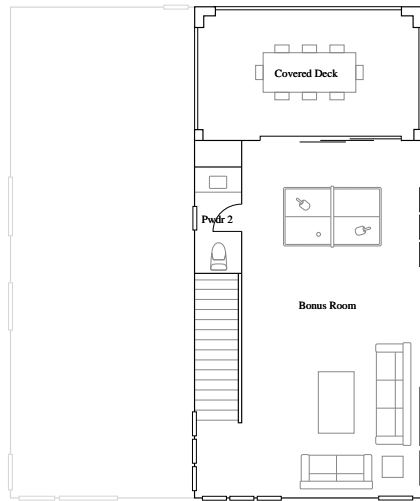
Aquila IX

LENNAR

Aquila IX

5 bd . 4 ba . 2 half ba . 3,150 ft²

3rd Floor



Available Exteriors



Boutique Exterior A



Transitional Exterior B



Modern Farmhouse Exterior C

Printed on 3/10/2025

Call us at 844-583-1082

5

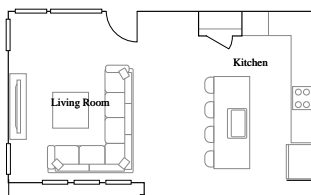
Aquila 2X



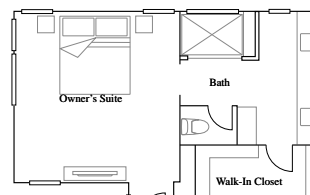
Aquila 2X

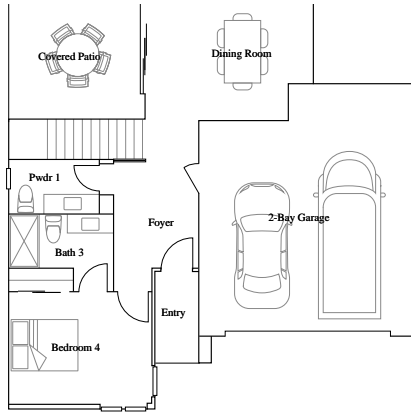
5 bd . 4 ba . 2 half ba . 3,281 ft²

1st Floor



2nd Floor





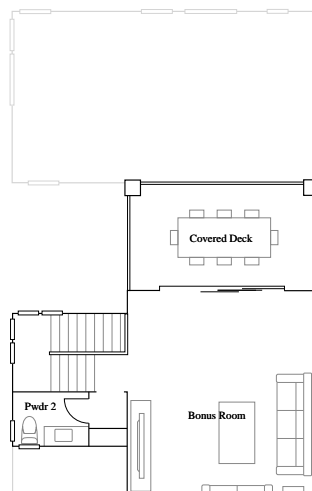
Aquila 2X

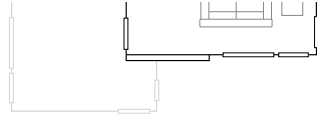
LENNAR

Aquila 2X

5 bd . 4 ba . 2 half ba . 3,281 ft²

3rd Floor





Available Exteriors



Boutique Exterior A



Transitional Exterior B



Modern Farmhouse Exterior C

Everything included

See all you can enjoy when everything's included

Kitchen

GE Café™ stainless-steel 36" French door refrigerator with dispenser

GE Café™ stainless-steel 36" gas cooktop with 5 gas burners

GE Café™ stainless-steel 36" commercial-style hood

GE Café™ stainless-steel 30" smart single wall oven with convection

GE Café™ stainless-steel built-in microwave/convection oven

GE Café™ Energy Star® stainless-steel interior dishwasher

Quartz countertops with 5" backsplash and full height at cooktop

Ceco® stainless-steel single-basin undermount sink with designer Moen® pull-down faucet

Moen® ½ hp garbage disposal

Shaker-style cabinetry with soft-close hinges (homesite color schemes pre-selected)

Under cabinet task lighting

Roll-out shelf for hidden recycling and trash bins

Owners Suite

Walk-in closet with wood shelving and shoe rack

Dual-sided mirrored salon door at walk-in closet

Semi-frameless shower enclosure with full-height ceramic tile surround and tile floor

Piedrafina™ countertops with 6" backsplash

Shaker-style cabinetry with soft-close hinges (homesite color schemes pre-selected)

Moen® bath hardware and accessories

Elongated toilets

Secondary Bathroom

Framed shower enclosure with ceramic tile surround and tile floor (location pre-selected)

Shower and bathtub combination with fiberglass surround (location pre-selected)

Piedrafina™ countertop with 6" backsplash

Shaker-style cabinetry with soft-close hinges (homesite color schemes pre-selected)

Moen® bath hardware and accessories

Elongated toilets

Laundry

Shaker-style cabinetry with soft-close hinges (homesite color schemes pre-selected)

Vacancy switch

Interior

Thermatru® 8' entry door

Elegant paneled interior doors

5 ½" baseboards

Plush wall-to-wall carpeting (select locations)

Resilient tile flooring at entry and wet areas

Rocker light switches

USB outlets (select locations)

Exterior

Designer-coordinated exterior color and roof combinations

Illuminated address lights

Seagull® decorator-selected coach lights

Insulated garage doors with automatic garage door opener and two remotes

Connectivity

Ring Video Doorbell Pro

Honeywell Home T6 Pro Wifi smart thermostat

Legrand® On-Q® RF Transparent Structured Media® Enclosure

Schlage Encode™ Smart Wifi Deadbolt

Energy Efficiency

Sherwin-Williams® low-VOC paint

LED lighting

Tankless water heater

Sealed heating and cooling ducts

Smoke alarms, carbon monoxide detectors and interior fire sprinklers

Dual-glazed windows with high-performance low-E glass

Weather stripping on all exterior doors

Pressure-balanced valves in showers and tubs

Services

Lennar Mortgage (financial services)

Lennar Insurance Agency (home insurance)

Lennar Title (title services)

myLennar (online assistant to help through the homebuying process)

Integrated solar energy system with real-time monitoring (provided through participation in the buyer-friendly LeasePlus™ New Home Solar Plan by Sunnova™)

Availability

Find the home that's right for you.

Prices and availability as of March 10, 2025. All subject to change.

Homesite	Price	Details	Plan	Address
● 0026	Priced at \$1,774,990	4 bd · 3 ba · 1 half ba · 2,542 ft ²	Aquila 1	100 Trask
● 0001	Priced at \$1,774,990	4 bd · 3 ba · 1 half ba · 2,542 ft ²	Aquila 1	101 Trask
● 0003	Priced at \$1,819,990	4 bd · 3 ba · 1 half ba · 2,653 ft ²	Aquila 2	109 Trask
● 0002	Priced at \$1,819,990	4 bd · 3 ba · 1 half ba · 2,653 ft ²	Aquila 2	105 Trask
● 0008	Priced at \$1,864,990	5 bd · 4 ba · 2 half ba · 3,150 ft ²	Aquila 1X	212 Lexford
● 0028	Priced at \$1,869,990	5 bd · 4 ba · 2 half ba · 3,281 ft ²	Aquila 2X	108 Trask
● 0025	Priced at \$1,899,990	5 bd · 4 ba · 2 half ba · 3,281 ft ²	Aquila 2X	104 Trask

Services

Service	Provider	Contact
Cable TV	Cox Communications	866-961-0275
Internet	Cox Communications	866-961-0275

Nearby schools

Public schools zoned for this community

El Toro High School

Public 9-12
Saddleback Valley Unified School District



Overall Niche Grade
[View on Niche.com](#)

#369 Best Public High School, CA

Serrano Intermediate School

Public 7-8
Saddleback Valley Unified School District



Overall Niche Grade
[View on Niche.com](#)

#444 Best Public Middle School, CA

Rancho Canada Elementary School

Public K-6
Saddleback Valley Unified School District



Overall Niche Grade
[View on Niche.com](#)

#970 Best Public Elementary School, CA

Crean Lutheran High School

9-12
Private Schools



Overall Niche Grade
[View on Niche.com](#)

#103 Best High School, CA

Plan your visit

Community information

Location

406 Clipper
Irvine, CA 92618

Hours

Mon	10:00 - 5:00
Tue	10:00 - 5:00
Wed	10:00 - 5:00
Thu	10:00 - 5:00
Fri	10:00 - 5:00
Sat	10:00 - 5:00
Sun	10:00 - 5:00

Phone

844-583-1082

HOA & Tax information

Aprox monthly HOA fees - \$260
Approximate tax rate - 1.89%

Why Lennar

We take pride in providing the easiest way to buy a home.

Where you want to live

We understand how you want to live, and create homes in communities in some of the most sought-after cities across the county.

A simpler way to buy

Our family of companies can assist you with your mortgage, title and insurance needs - allowing you to save time and money.

Something for everyone

We understand homebuilding, and people. Our homes cater to a variety of lifestyles, and reflect the culture and region in which they're built.

Features, amenities, floor plans, elevations, and designs vary and are subject to changes or substitution without notice. Items shown are artist's renderings and may contain options that are not standard on all models or not included in the purchase price. Availability may vary. Sq. ft. and dimensions are estimated; actual sq. ft. and dimensions will differ. Garage/bay sizes may vary from home to home and may not accommodate all vehicles. This is not an offer in states where prior registration is required. Void where prohibited by law. Copyright © 2021 Lennar Corporation. Lennar and the Lennar logo are U.S. registered service marks or service marks of Lennar Corporation and/or its subsidiaries. Seller's Broker: Lennar Realty, Inc. Construction License(s): CGC1518166. Date 1/22



Copyright © 2023 Lennar Corporation. All right reserved.